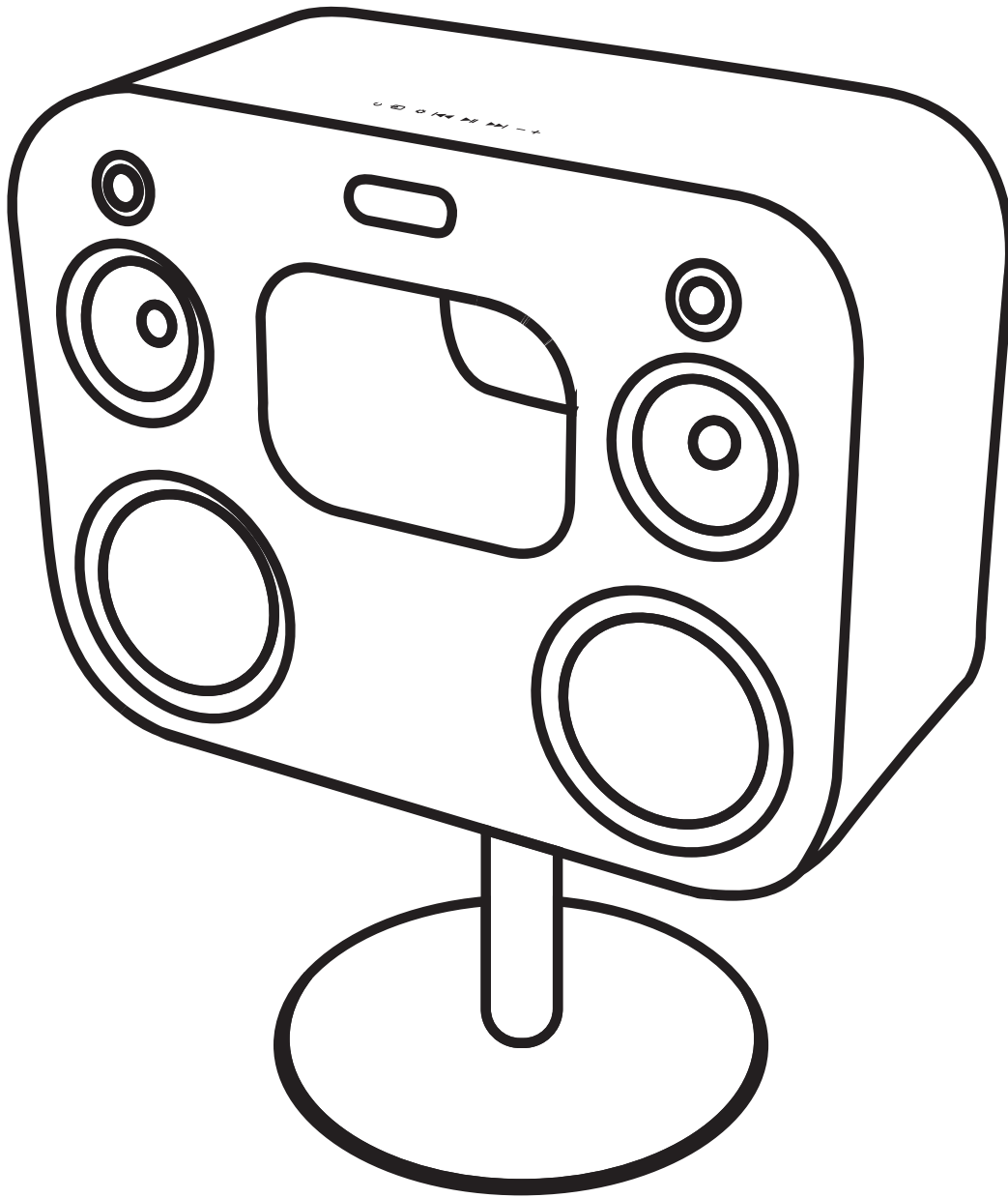


Instruction Manual



Fi70 Three-Way Wireless High Fidelity Music System



FCC STATEMENT



This device complies with part 15 of the FCC rules. Operation is subject to the following two conditions:

- (1) this device may not cause harmful interference, and
- (2) this device must accept any interference received, including interference that may cause undesired operation

Warning:

This equipment has been tested and is found to comply with the limits for a Class B digital device, pursuant to Part 15 of the FCC Rules. These limits are designed to provide reasonable protection against harmful interference in a residential installation. This equipment generates, uses and can radiate radio frequency energy and, if not installed and used in accordance with the instructions, may cause harmful interference to radio communications. However, there is no guarantee that interference will not occur in a particular installation. If this equipment does cause harmful interference to radio or television reception, which can be determined by turning the equipment off and on, the user is encouraged to try to correct the interference by one or more of the following measures:

- Reorient or relocate the receiving antenna
- Increase the separation between the equipment and receiver
- Connect the equipment into an outlet on a circuit different from that to which the receiver is connected
- Consult the dealer or an experienced radio/TV technician for help

Warning:

Changes or modifications not expressly approved by the party responsible for compliance with the FCC Rules could void the user's authority to operate this equipment.

IC STATEMENT / CAN ICES-3 (B)/NMB-3 (B)

Industry Canada Statement

Operation is subject to the following two conditions:

- (1) this device may not cause interference, and
- (2) this device must accept any interference, including interference that may cause undesired operation of the device.

SAFETY INFORMATION

1. Read all instructions.
2. Keep these instructions.
3. Heed all warnings.
4. Follow all instructions.
5. Do not use this apparatus near water.
6. Clean only with a dry cloth.
7. Do not block any ventilation openings. Install in accordance with the manufacturer's instructions.
8. Do not install near any heat sources such as radiators, heat registers, stoves, or other apparatus (including amplifiers) that produce heat.
9. Do not defeat the safety purpose of the polarized or grounding-type plug. A polarized plug has two blades with one wider than the other. A grounding type plug has two blades and a third grounding prong. The wide blade or the third prong are provided for your safety. If the provided plug does not fit into your outlet, consult an electrician for replacement of the obsolete outlet.
10. Protect the power cord from being walked on or pinched particularly at plugs, convenience receptacles, and the point where they exit from the apparatus.
11. Only use attachments/accessories specified by the manufacturer.
12. Unplug this apparatus during lightning storms or when unused for long periods of time.
13. Refer all servicing to qualified service personnel. Servicing is required when the apparatus has been damaged in any way, such as power-supply cord or plug is damaged. Liquid has been spilled or objects have fallen into the apparatus, the apparatus has been exposed to rain or moisture, does not operate normally, or has been dropped.
14. Apparatus shall not be exposed to dripping or splashing, and that no objects filled with liquids, such as vases, shall be placed on the apparatus.
15. The battery shall not be exposed to excessive heat such as sunshine, fire or the like.
16. The direct plug-in adapter is used as disconnect device, the disconnect device shall remain readily operable.
17. **WARNING:** To reduce the risk of fire or electric shock, do not expose this apparatus to rain or moisture.

This device complies with part 15 of the FCC Rules. Operation is subject to the following two conditions:

1. This device may not cause harmful interference, and
2. This device must accept any interference received, including interference that may cause undesired operation. This Class [B] apparatus complies with Canadian ICES-003.



This marking indicates that this product should not be disposed with other household wastes throughout North America. To prevent possible harm to the environment or human health from uncontrolled waste disposal, recycle it responsibly to promote the sustainable reuse of material resources. To return your used device, please use the return and collection systems or contact the retailer where the product was purchased. They can take this product for environmental safe recycling.



TABLE OF CONTENTS

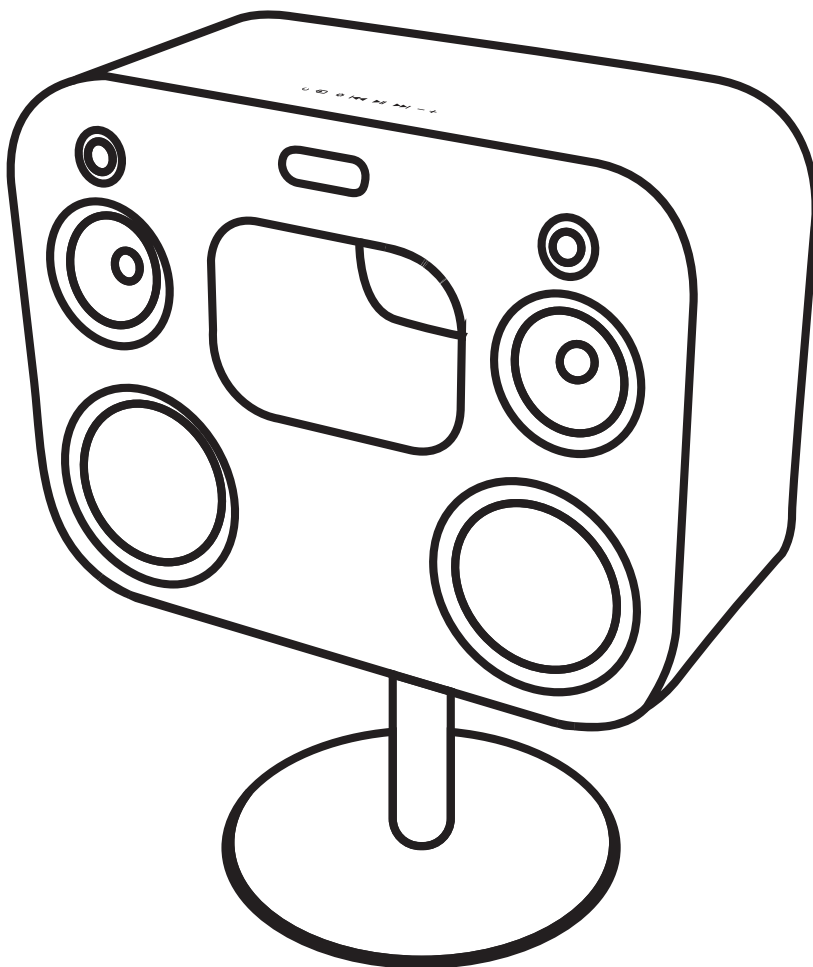
SAFETY INFORMATION.....	3
FEATURES	5
WHAT'S INCLUDED	5
ASSEMBLING THE STAND TO THE CABINET	6
POWERING THE UNIT	6
SETTING UP BLUETOOTH	6
OPTIONAL CABLE SET UP.....	7
REMOTE BUTTONS.....	8
CABINET BUTTONS.....	8
SET TIME	8
SET SLEEP TIMER	8
SET ALARM	9
SET RADIO PRESETS	9
OPERATION.....	10
PAIRING MULTIPLE DEVICES	10
OUT OF RANGE OR LOST SIGNAL.....	10
USB CHARGING PORT	11
RESET PAIRING	11
SPECIFICATIONS	12
TROUBLESHOOTING	13
FAQ	14
WARRANTY INFORMATION	15

FEATURES

- Hand-built internally braced MDF wood cabinet for an overall natural sound
- Butyl rubber surrounds provide longer excursion, better linearity and increased durability
- Ferro-fluid cooled tweeters for longer life
- Powerful 280W integrated amplifier boasts extreme accuracy for a well-defined sound
- Two finely tuned bass ports control low frequency and improve efficiency
- Bluetooth auto pairing technology with aptX premium audio
- Detachable base creates a commanding stance while also providing additional stability
- Adjustable bass and treble equalizer to fine tune to your performance preference
- Sleek touch panel controls with illuminated LED display (dimnable)
- Magnetic grills detach to reveal a smooth finish with no visible fasteners
- 2.1A USB port for rapid charging of your devices and a 3.5mm auxiliary input allows for direct connection
- Optical Toslink input allows for direct connection to a television
- Digital AM/FM radio and alarm clock functionality

WHAT'S INCLUDED

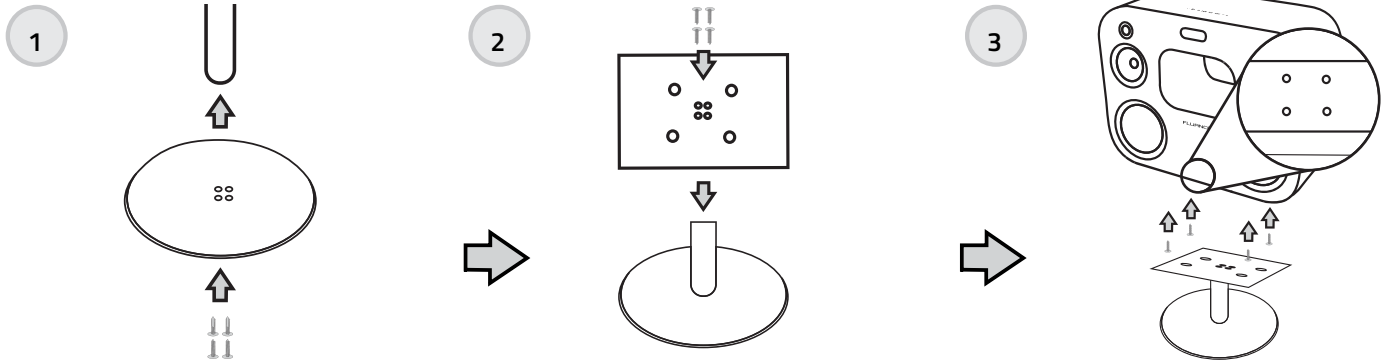
- High Performance Wireless Music System
- Low Profile Stand with Mounting Hardware
- Remote Control
- AM/FM Radio Antennas
- Quick Start Guide
- 2 Year Parts and Labor Warranty
- Lifetime Customer Support



Disclaimers

Maximum line of sight for Bluetooth transmission range is 33 feet. Obstacles may decrease transmission distance. Certain Bluetooth features, including those listed, may not be supported by all compatible Bluetooth-enabled devices, and/or the functionality of such features may be limited in certain devices, or by certain wireless carriers. We reserve the right to change models, configuration, or specifications without notice or liability. Product may not be exactly as shown. ©2016 FLUANCE®. FLUANCE®, the FLUANCE® logo, and any other FLUANCE® marks may be registered. All other trademarks are property of their respective owners.

ASSEMBLING THE STAND TO THE CABINET

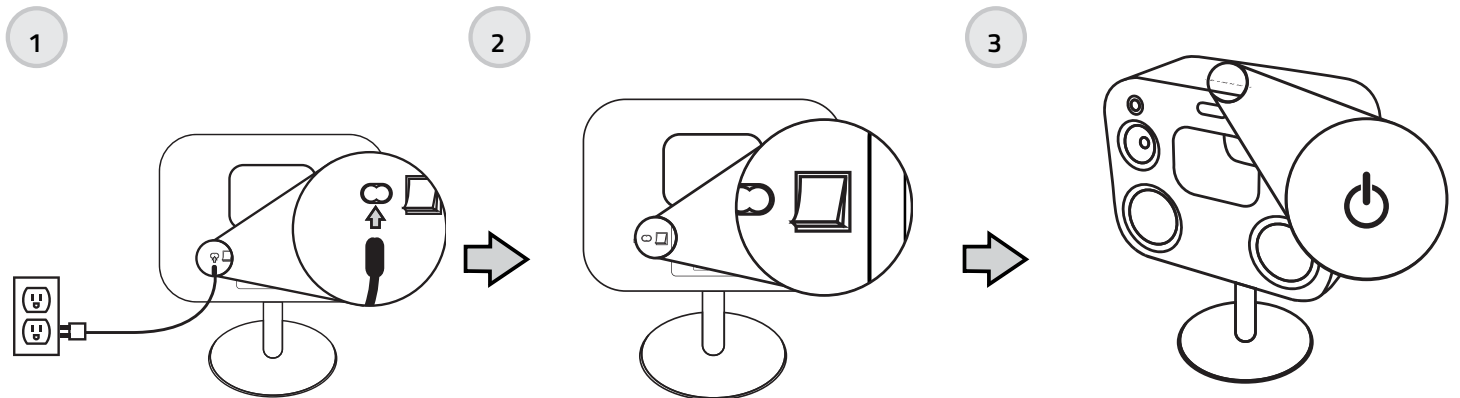


Attach pole to the base
(washers and large screws)

Attach pole to the bracket
(small screws)


Attach assembled stand to the
cabinet (bolts)

POWERING THE UNIT

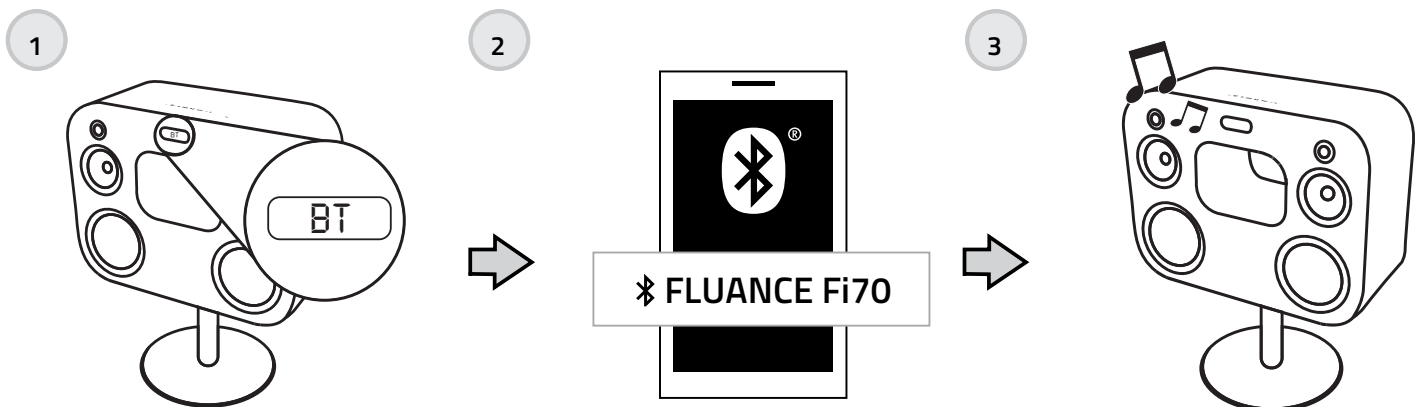


Plug power adapter into an outlet
and into your cabinet

Flip power switch on

Press the  button on the
remote or cabinet

SETTING UP BLUETOOTH

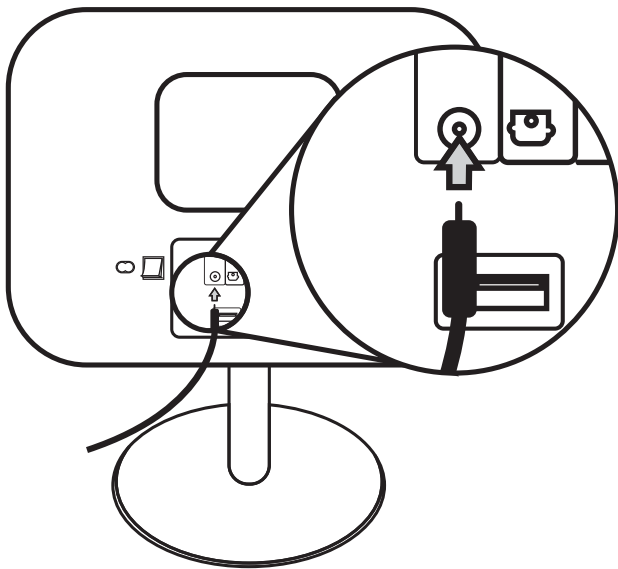


Press the  button until you see
"BT" on the LED screen

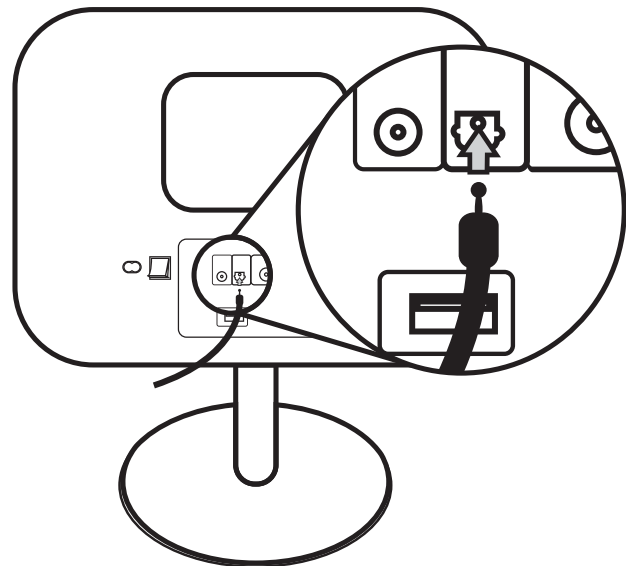
Connect to Fluanice Fi70 from your mobile
device's Bluetooth settings

Play music

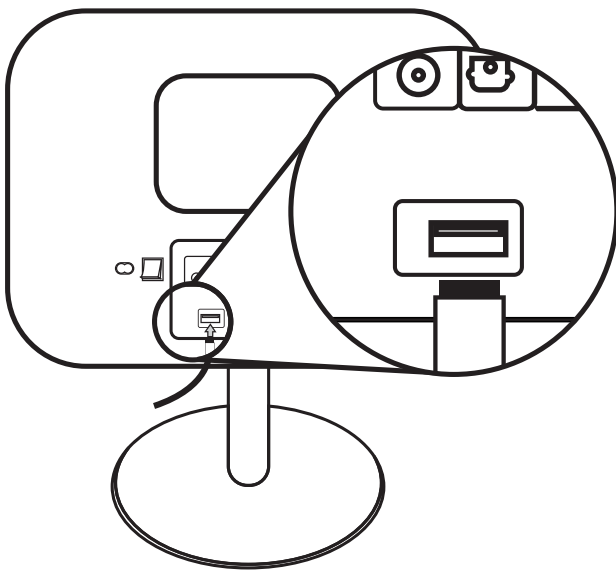
OPTIONAL CABLE SET UP



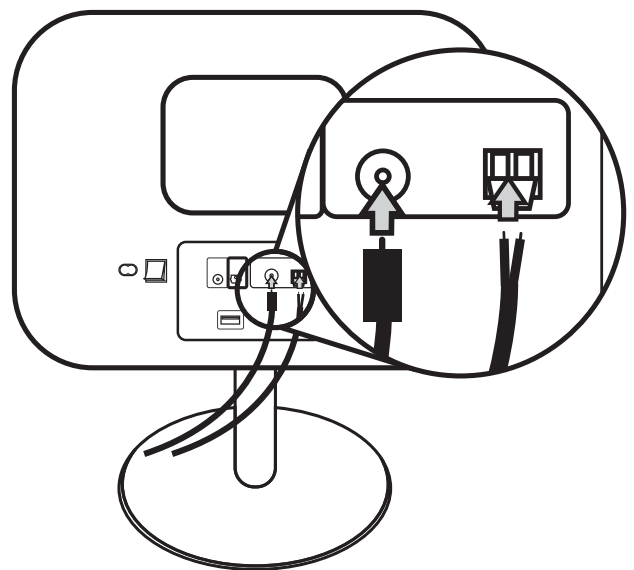
AUX: Mobile devices for music



Optical: To TV

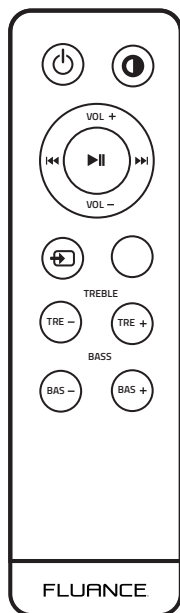


USB: Charging mobile devices



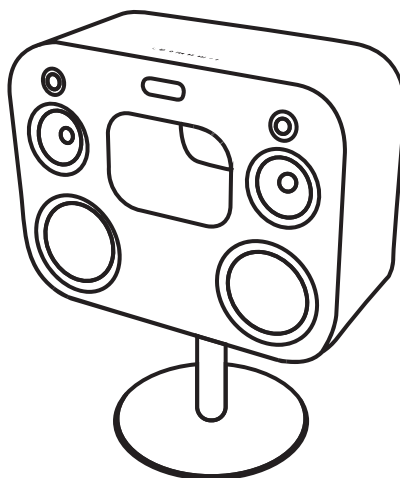
AM/FM antenna: Radio listening

REMOTE BUTTONS



- Power
- Display
- Forward/Back*
- Play/Pause
- Volume
- Source
- Settings
- Treble
- Bass

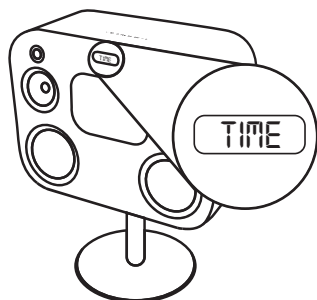
CABINET BUTTONS



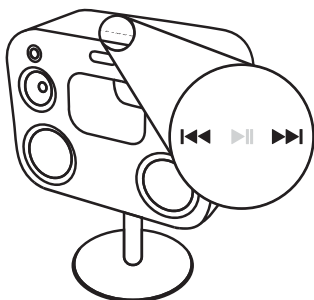
- Power
- Source
- Settings
- Forward/Back*
- Play/Pause
- Volume

*NOTE: Previous Track/Next Track (when on Bluetooth); Previous radio station/Next radio station (when on radio source)

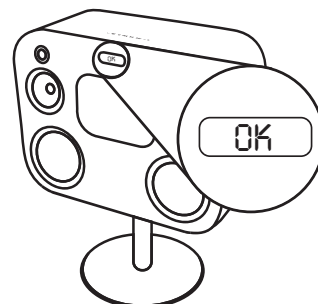
SET TIME



Press the button until you see "TIME" displayed on the LED screen
You will now see either AM or PM
Use the buttons to cycle between both settings.

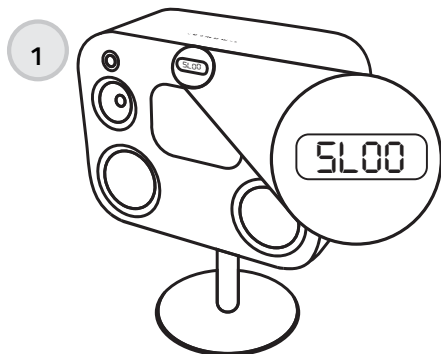


Press the button to confirm
Press the buttons to select the hour
Press the button to confirm

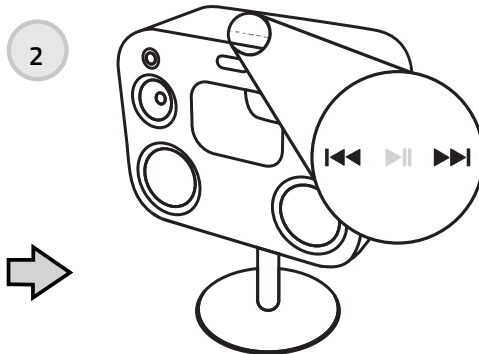


Press the buttons to select the minutes
Press the button to confirm
"OK" will now be displayed on the LED screen

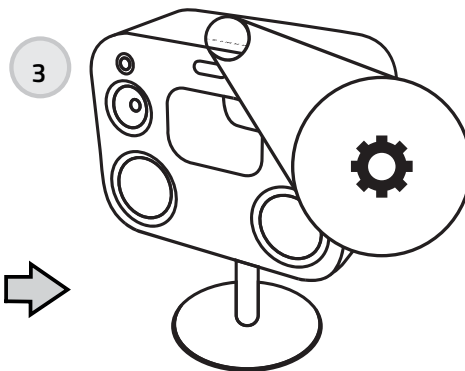
SET SLEEP TIMER



Press the button until you see "SL00" or a combination of SL and two other digits (ex. SL15)



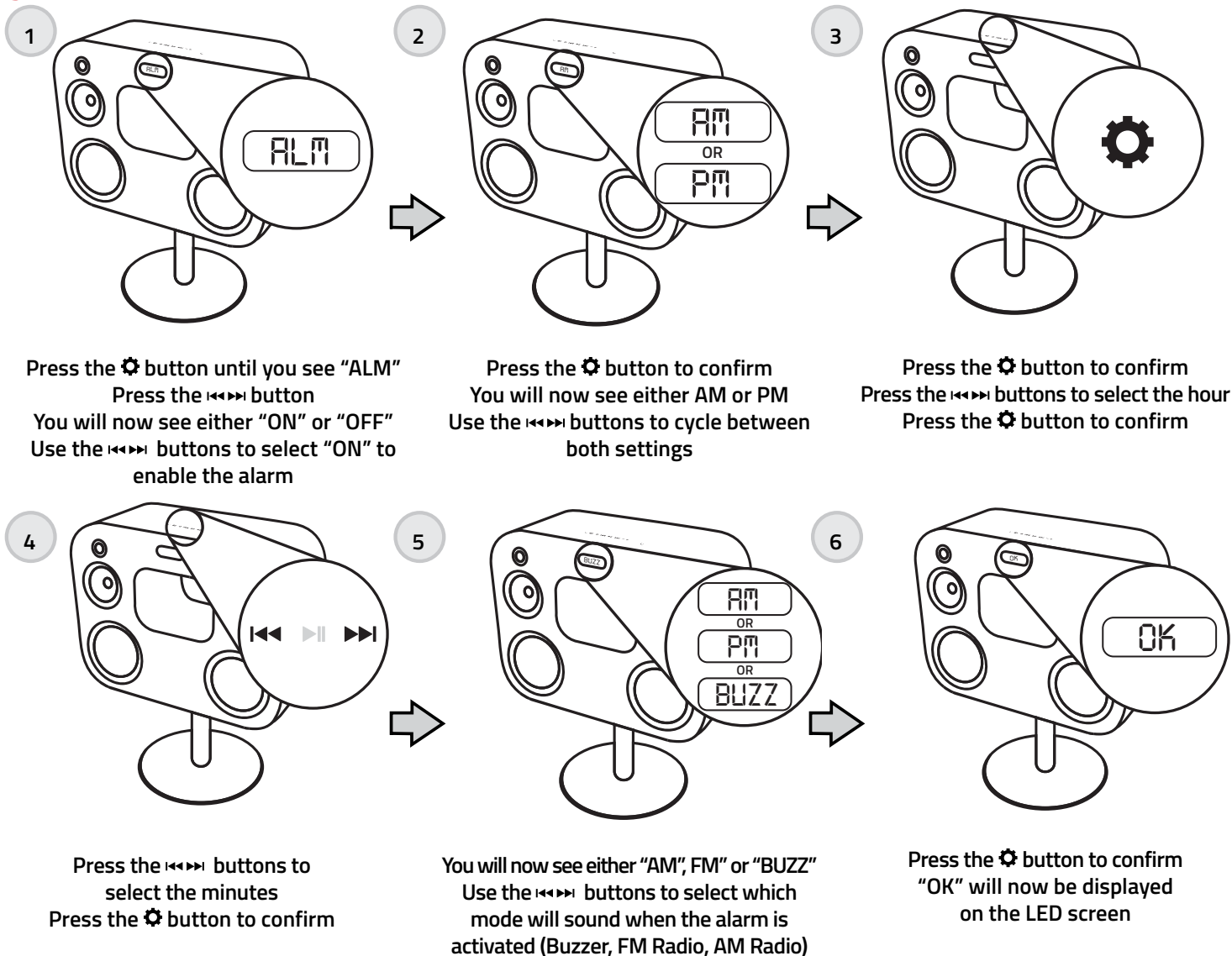
Press the buttons to select the amount of minutes to pass before entering sleep mode



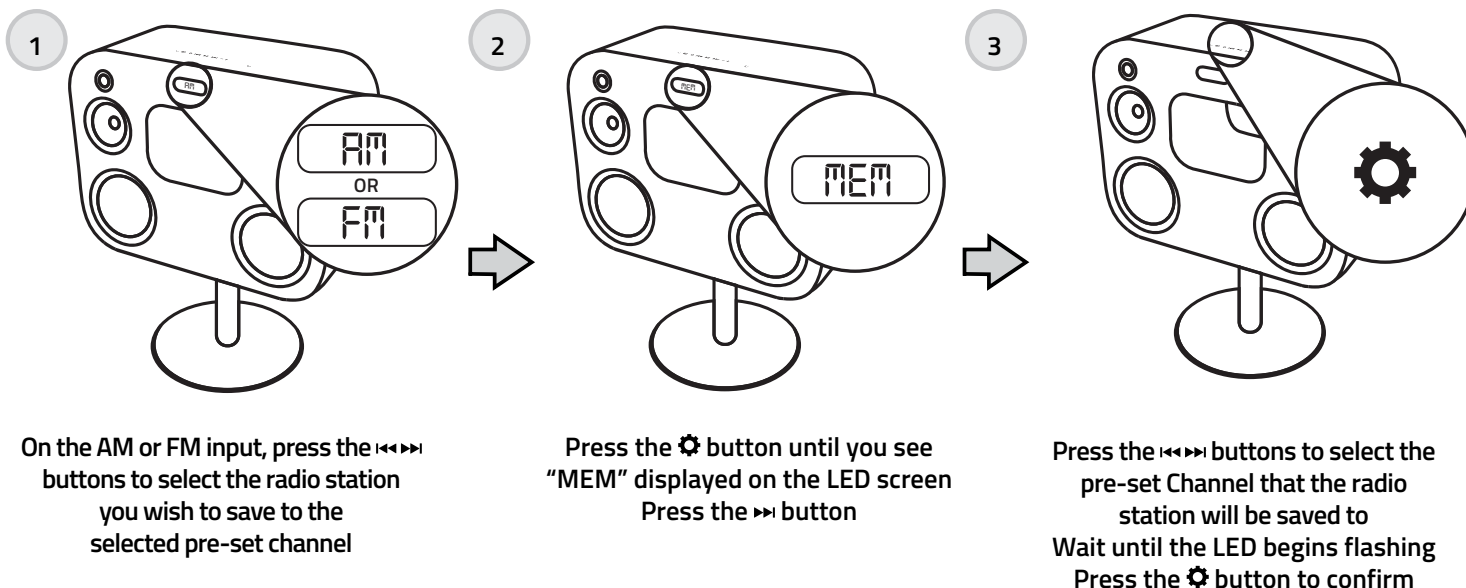
Press the button to confirm
"OK" will now be displayed on the LED screen

NOTE: The sleep timer can be set in 5min Intervals (5, 10, 15, 20 etc.)

SET ALARM



SET RADIO PRESETS



OPERATION

Pairing multiple devices

Although the Fluance Fi70 can only play music from one device at a time, it can memorize up to 8 device profiles. Switching from one device to another:

1. Access the **SETTINGS** and turn Bluetooth function of the device OFF.
2. The Fluance Fi70 can now be connected to a different device.

Reconnecting your device

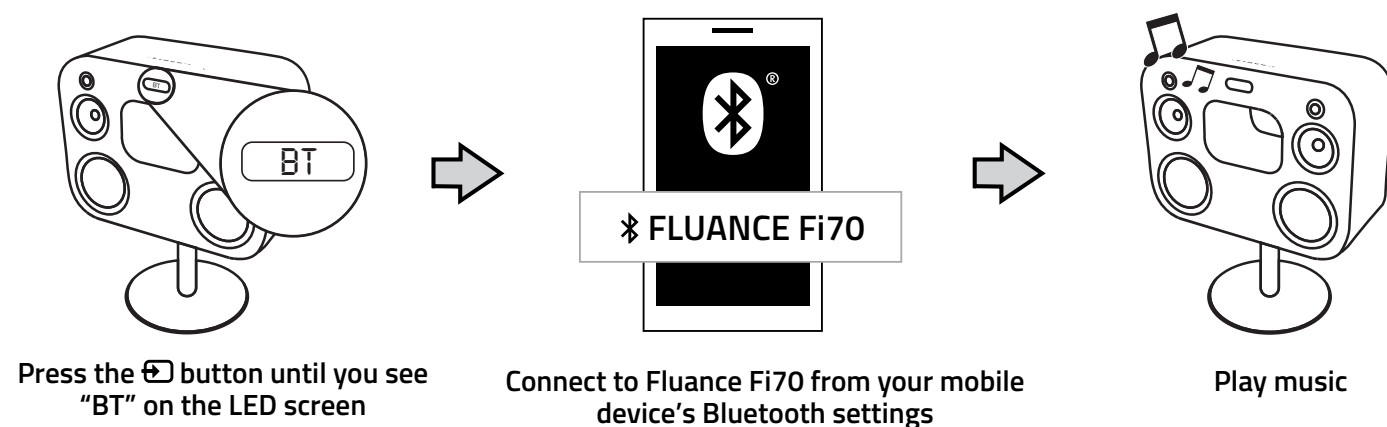
If you move out of range or turn off the Bluetooth feature on your device, the Fluance Fi70 will disconnect from your device. To reconnect, simply turn the Bluetooth feature back on or move within 33 feet (line of sight) of the Fluance Fi70.

Unit will auto-pair if it was the last device connected. If not, please refer to the pairing instructions.

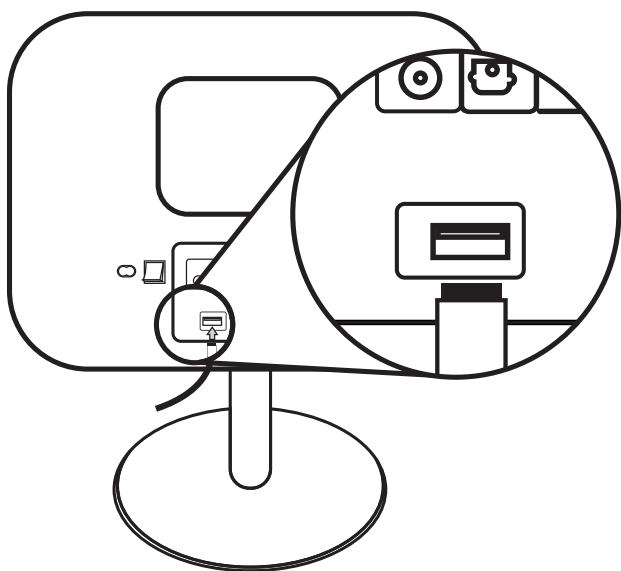
Out of Range or Lost Signal

If the music device is out of range (beyond 33 feet) of the Fluance Fi70 or if there is something blocking the Bluetooth signal, the Bluetooth logo LED will flash to indicate that the Bluetooth connection with the music device has been lost. To avoid a lost connection:

1. Move the music device back into range (within 33 feet), and/or make sure there's a clear line of sight and that there are no obstructions between the Fluance Fi70 and the device.
2. Within 15 seconds, the connection will automatically be reestablished and the Bluetooth LED light will turn solid.
3. If the connection is lost for more than 15 seconds, the connection will need to be reestablished. Follow the instructions in the "Reconnecting your device" section.



OPERATION

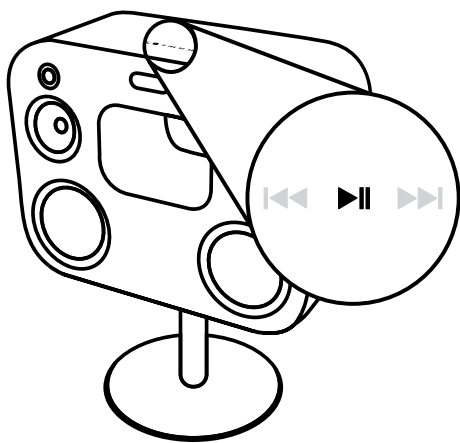


USB Charging Port

The USB Charging Port allows for quick and easy charging of your smartphone or tablet while still enjoying your music. The USB input cannot be used for playback.

1. Connect one end of the USB Cable to the 2.1 A USB Charging Input on the Fluanice Fi70.
2. Connect the other end of the USB Cable to your Smartphone/Audio Device.
3. You can continue to enjoy your music using your Smartphone/Audio Device while it is charging.

USB port is for charging smartphone and tablets only.



Touch Panel



Remote Buttons

Reset Pairing

The Reset Pairing button is used to unpair another paired device, allowing you to connect a new device to the Fluanice Fi70.

1. Press and hold the Play/Pause button on the Fluanice Fi70 to break any existing Bluetooth connections.
2. The unit will search for a new device for 30 seconds. After 30 seconds, if no new connection is made, it will auto-pair back to the previous device.
3. You can also unpair the connection directly from your Smartphone by disabling the Bluetooth connection.

SPECIFICATIONS

Specifications are subject to change without notice. Measurements and weights may vary slightly.

System Type	2 Way 6 Driver Wireless Music System with Integrated Amplifier
Tweeter	Dual 1 Inch Silk Soft Dome Ferro fluid Cooled
Midrange	Dual 5 inch Woven Glass Fiber Composite Drivers with Butyl Rubber Surrounds
Woofer	Dual 8 inch Polymer Treated High Excursion with Butyl Rubber Surround
Bluetooth	2.1 + EDR (Enhanced Data Rate); aptX codec
Input	3.5mm Auxiliary Audio Input; 2.1 A USB Charging Input, Optical (Digital Toslink), FM/AM Radio Tuner
Frequency Response	30Hz - 20KHz
Crossover Frequency	150Hz / 2500Hz Phase Coherent – PCB Mounted Circuitry
Amplifier Power (RMS)	280 Watts Continuous Average Output
Enclosure	Tuned Rear Port Bass Reflex Design
Cabinet	MDF Wood Cabinet
Internal Lead Wire	18 gauge internal lead wire to reduce signal degradation
Power	120V, 60 Hz
Dimensions (W x D x H)	29.5 x 11 x 23.2 inch (without stand) 29.5 x 11 x 36 inch (with stand)
Weight	81 lbs
FCC	Yes
ICES	Yes
cETLus	Yes

TROUBLESHOOTING

Issue	Device	Fluance Fi70
No music from Fluance Fi70 speakers using Bluetooth	<ul style="list-style-type: none"> Confirm that your Smartphone/ Audio Device is powered ON Confirm that the Bluetooth function is ON Confirm you are connected via Bluetooth with the Fluance Fi70 Confirm you are playing music from your Smartphone/Audio Device Confirm that the volume is set to a comfortable listening level Confirm you are within range of the Fluance Fi70 	<ul style="list-style-type: none"> Confirm that the Fluance Fi70 is powered ON Confirm you are within range of the Smartphone/Audio Device Confirm that an Auxiliary Audio Cable is NOT connected to the AUX IN input of the Fluance Fi70 Confirm that the volume on the Fluance Fi70 is set to a comfortable listening level Confirm you are set to the Bluetooth source input.
No music from Fluance Fi70 speakers using Auxiliary Audio Cable	<ul style="list-style-type: none"> Confirm that your Smartphone/ Audio Device is powered ON Confirm that the Auxiliary Audio Cable is correctly and firmly connected to the Headset Input of your device Confirm you are playing music from your Smartphone/Audio Device Confirm that the volume is set to a comfortable listening level 	<ul style="list-style-type: none"> Confirm that the Fluance Fi70 is powered ON Confirm that the Auxiliary Audio Cable is correctly and firmly connected to the AUX IN input of the Fluance Fi70 Confirm that the volume on the Fluance Fi70 is set to a comfortable listening level
No music from AM/FM Tuner	<ul style="list-style-type: none"> N/A 	<ul style="list-style-type: none"> Ensure the antennas are properly connected to the correct input on the back panel Ensure the antenna wiring is fully extended Ensure the Fi70 is tuned to the correct station

FAQ

What does the "Display" toggle do?

The display toggle will cycle between 3 modes. Time, Source, and Display OFF.

How do I adjust the Volume / Change the Bass or Treble?

Select the equalizer using the settings button on the touch panel or using the Bass/Treble EQ buttons on the remote. Use the +/- buttons to increase or decrease volume accordingly. The range of the BASS/TREBLE is -10 to 10 and the range of volume is 0 to 40.

What is "Auto-Pairing" and how does it work?

Auto-Pairing is a convenient connection feature implemented into all Fluance Bluetooth enabled speakers. If the connected Bluetooth enabled device leaves the connection range of the Fi70 and returns at a later time, the device will automatically connect. If the device's Bluetooth function is disabled and then enabled at a later time, the device will automatically connect as well. Please note that the Fluance Fi70 will only auto-pair to the last device that it was connected to and if the Fi70 is set to its Bluetooth input.

What is the purpose of the USB port on the back panel?

The USB port is designed to charge any of your devices such as smartphones, tablets, music players, etc., however, it cannot be used for playing audio files with the Fi70.

I can't connect my device to the Fi70.

Please ensure Bluetooth is enabled on your device and attempt to re-pair with the Fi70.

Another device is connected to the Fi70 and I wish to connect my device.

You can reset any Bluetooth connection by pressing and holding the "Play/Pause" button on the remote/touch panel. The Fi70 will be available to connect to any new device for the next 30 seconds. If no device is found, the Fi70 will auto-pair back to the previously connected device. Please note only one device can be paired at a time.

What is the range of the Bluetooth Connection?

The Fi70 operates with Power Class 2 Bluetooth devices, which have a range of approximately 33' feet (line of sight).

What is the break-in period for Fluance speakers?

The break in period for our speakers is about 10 hours of playing time at normal listening volumes. After this period the drivers will have had enough movement to perform at their peak level.

How you access your Bluetooth Settings may vary from one manufacturer to another. Maximum line of sight for Bluetooth transmission range is 33 feet. Obstacles may decrease transmission distance.

WARRANTY INFORMATION

Fluance gives the following warranty to the original customer of each new Fluance product purchased from a dealer authorized by Fluance. Fluance warrants that each new product, under normal use, is free from defects, subject to the terms and conditions set forth. If a defect should occur within the warranty period, repairs will be made free of charge for parts and labor when such defects are determined by us to be attributable to faulty materials or workmanship at time of manufacture.

Warranty Period

The FLUANCE® products listed below are warranted for parts and labor for the stated period from the date of original purchase and are subject to the terms and conditions of the warranty.

Home Audio Passive Speakers: Lifetime Warranty

Active/Powered Speakers: 2 Year Warranty

HiFi Turntables: 2 Year Warranty

Warranty Exclusions

- Products purchased from a dealer not authorized by Fluance.
- Products with the serial number defaced, altered or missing.
- Defects resulting from disaster, accident, abuse, misuse, lightning, power surges, neglect, unauthorized modification or water damage.
- Defects or damage as a result of repairs performed by a person or party not authorized by Fluance.
- Defects or damage occurring during shipping (claims should be made with the shipping company).
- Defect or damage as a result of connecting a product to an outlet with the incorrect voltage. Voltage converters must be used where applicable.

To Obtain Warranty Service

Should your Fluance product require warranty service, please contact your Fluance Authorized Dealer and send your product fully insured and freight prepaid to the nearest Fluance authorized service center. Before sending to Fluance, you will be required to get a Return Authorization Number from your dealer.

Products shipped without a valid Return Authorization Number will be refused. To avoid possible shipping damage, make sure the product is properly packaged and well protected. Include a copy of your original bill of sale as proof of warranty along with your name, home and/or work telephone number(s), a complete return address and a detailed description of the faults.

Products repaired within warranty will be returned freight prepaid. This warranty in itself is not considered a valid proof of purchase. When applying for warranty repairs, you must present the original copy of your bill of sale as proof of warranty.

Fluance.com